

Precautions for each of DIONavi. cases at the time of scanning | General Cases

Acquisition of impression

Meticulously scan to ensure there is no empty space in the tooth next to the area of procedure.

Accurate acquisition of impression is necessary since Surgical Guide is produced on the basis of Scan data.

① TRIOS Scan

- Scan all the mandibular and maxillary bites
- Precision check by converting the color mode to black and white after Trios scanning
- Trios research institute account : Select DIONavi.
- File name : Hospital name - Patient name



② Model Scan

- Take impression of all the mandibular and maxillary bites
- Take precaution to ensure that air bubbles or sharp edges do not form in the model



CBCT imaging

① Anatomical structure must be visible normally

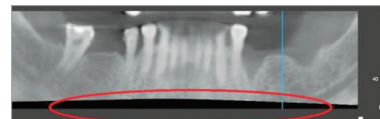
Sinus Case

Image of maxillary sinus is cut off



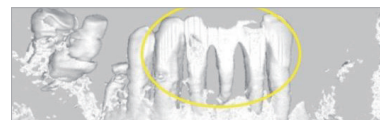
Mandibular Case

Image of mandibular nerve is cut off



Incisor section Case

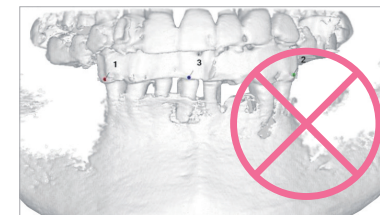
Image of incisor section is cut off



② Take image with Open Bite

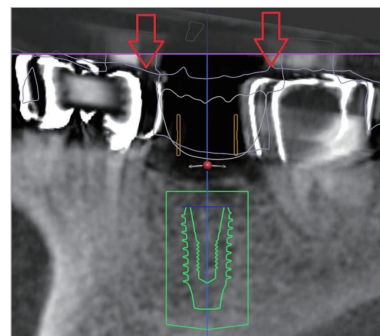


| Open Bite



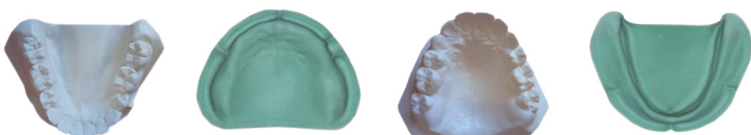
| Close Bite

③ Must ensure that the patient does not move



Precautions for each of DIONavi. cases at the time of scanning | Edentulous jaw Case

Precautions at the time of acquisition of impression of stone model



※ Make sure to include the order sheet and take the impression of maxillary and mandibular model for forwarding to the headquarters of DIO.

① Produce maxillomandibular plaster model

- <Precaution> Acquire impression by extending to the border section along with the denture impression
- Impression of antagonist tooth must be taken in consideration of occlusion relationship

② Register order with Splint in the DIONavi. site (www.dionavi.co.kr)

- Make sure in indicate the location of embedding of implant (dental formula No.)

③ Forward maxillomandibular plaster model + printed order sheet of DIONavi. site together to the DIO Implant

Production of Splint [DIO Implant]

DIONavi. Team will produce splint and forward it back to the Clinic.

Cases received **after 4:00 PM** for the stone model

Takes 3 nights and 4 days

Cases received **before 4:00 PM** for the stone model

Takes 2 nights and 3 days

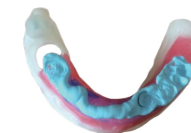
CBCT imaging [Clinic]



① Send splint to clinic

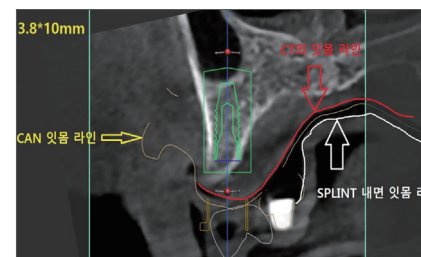


② Check VD in the oral cavity of the patient



③ CBCT imaging while wearing splint

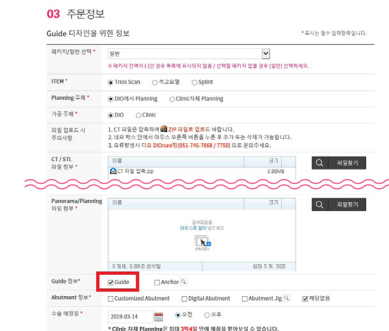
Caution 1 Splint will not move only if VD check is performed first. You must check whether it has been normally attached in the oral cavity.



Caution 2 It is not possible to produce guide if CT is taken while splint is not completely attached to the gum.



④ CBCT imaging

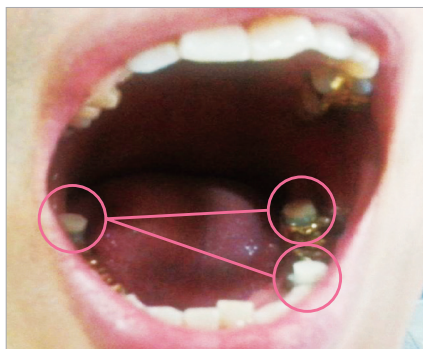
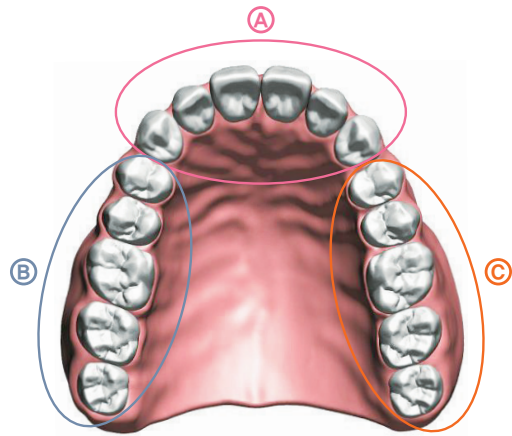


⑤ Write new order sheet and upload the CT file

Precautions for each of DIONavi. cases at the time of scanning | Case with metal prosthesis

Attach Marker or Resin

- ① Attach to arch for which surgical guide is produced
- ② Attach to 3 locations in the oral cavity with exclusion of area of procedure (widely)
- ③ Apply sufficient amount of flow resin after having dried the binding surface with air, before placing marker or resin and irradiate light with photo-polymerizing device for 10 seconds



Standards for attachment of marker or resin

- Attach when there is metal prosthesis in the A region
 - Attach when there is metal prosthesis in the B region
 - Attach when there is metal prosthesis in the C region
- ※ Attach marker or resin if there is continuous prosthesis in each of the regions.

Acquisition of impression and taking CT

TRIOS Scan

[Scanning] Prior to the attachment of marker or resin

- ① Oral scan for the arch on the area of procedure
- ② Oral scan for antagonistic teeth
- ③ Oral scan on occlusion

[Scanning] After having attached marker or resin

- ④ Download the data on the area of procedure already scanned and delete the tooth at the position at which marker or resin is attached from the image before additionally scanning the area to which marker or resin is attached
 - ⑤ Take CT while marker or resin is attached
- ※ Take care to ensure it does not fall off at the time of moving / Open bite).

Acquisition of Model

[CT Taking] Prior to attachment of marker or resin

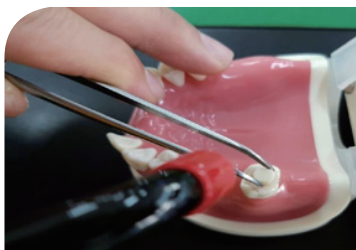
- ① Take care to ensure marker or resin does not fall off at the time of moving for CT taking
- ② Take care that marker or resin does not get cut off
- ③ Take image with open bite

[Acquisition of impression]

- ① Take impression after having attached marker or resin and produce stone model
 - ② Take impression of antagonistic tooth
 - ③ Acquire bite
- ※ It is recommended that impression is acquired on the side being worked on by using rubber impression material.

Medical adhesive | Tip using histoacryl

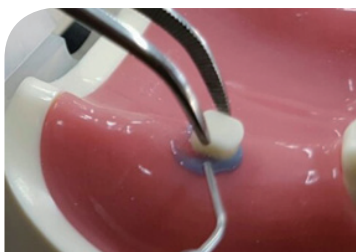
Metal Artifact Case



- ① Hold the Marker with tweezers and situate it on the occlusion surface of the tooth to be attached.
- ② Apply flow resin and cure it with photo-polymerization device. 🕒 5~10 seconds

Partical Edetulous Case

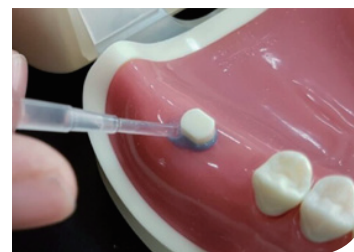
Method of attaching marker by using histoacryl



→

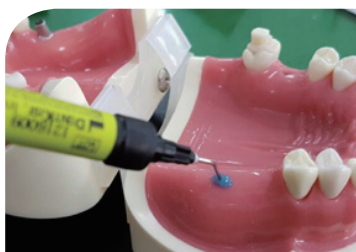


→



- ① Hold the marker with tweezers and situate it on the occlusion surface of the tooth to be attached.
- ② Apply flow resin and cure it with photo-polymerization device. 🕒 5~10 seconds
- ③ Apply histoacryl to area around resin. 🕒 20 seconds

Method of attaching flow resin by using histoacryl



→



→



- ① After having poured flow resin onto the gum to be attached to, cure it with photo-polymerization device. 🕒 5~10 seconds
- ② Apply histoacryl to area around resin.